

# Note & Rhythm Labeling

## LEVEL 1 & 2 - 4/4 & 3/4

These two exercises can be timed and completed separately.  
When complete, they may be used for sight-singing at a later date.

### **Solfege labeling directions:**

Under each note, label the appropriate solfege syllable.

Be sure to use the abbreviated solfege (d, r, m, f, s, l, t). Writing out the full words will slow down the labeling process.

All exercises begin and end on 'do'. Please make sure to label 'd' as first and last pitch.

### **Rhythm labeling directions:**

Each exercise is either in 4/4 or 3/4 time.

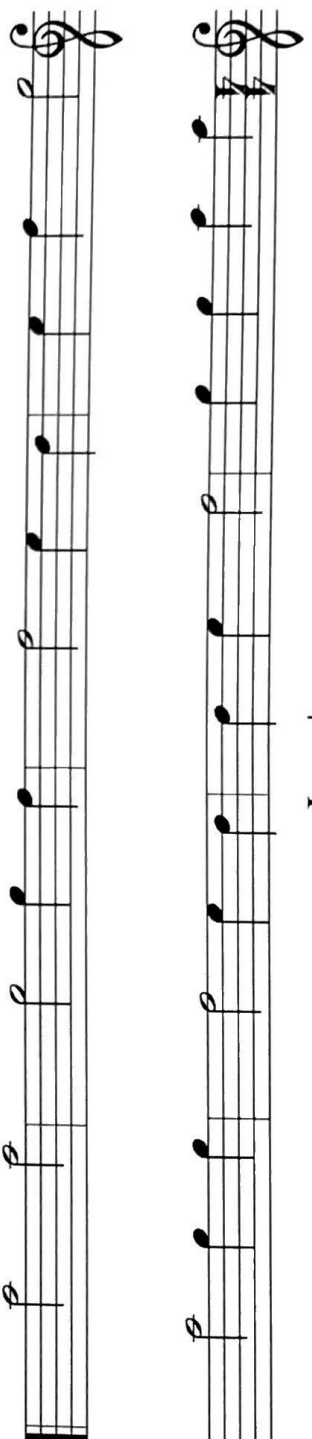
In 4/4 time:

Each measure has 4 beats. Above each measure, label all 4 beats and include the subdivision of the eighth notes, even when no eighth notes exist. This means, all measures will have 1234.

In 3/4 time:

Each measure has 3 beats. Above each measure, label all 3 beats and include the subdivision of the eighth notes, even when no eighth notes exist. This means, all measures will have 123.

# Level 1 | Soprano

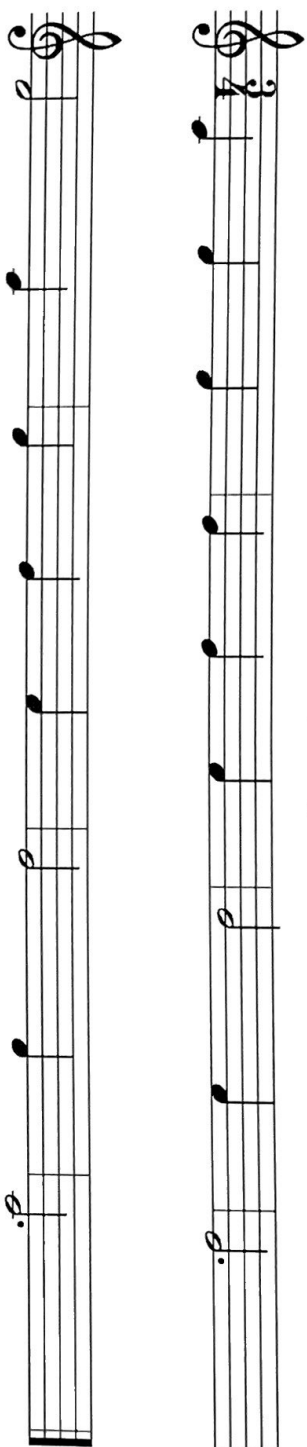


© Gracenotes LLC 2022

## Level 1 | Soprano

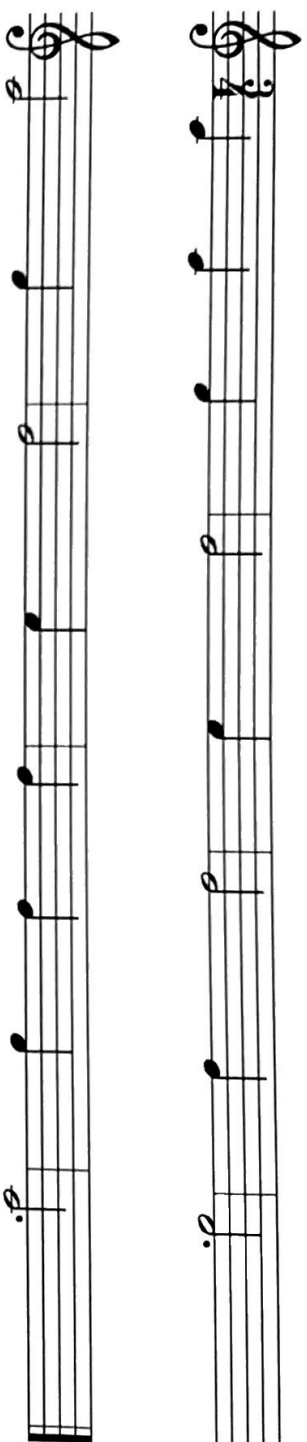
© Gracenotes LLC 2022

# Level 1 | Soprano



© Gracenotes LLC 2022

# Level 1 | Soprano



© Gracenotes LLC 2022

## Level 2 | Soprano

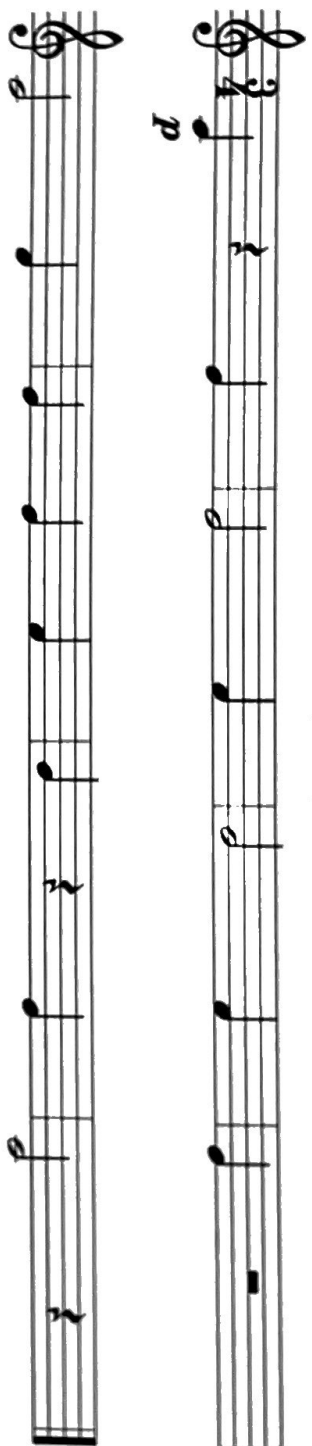
The image displays a musical score for a Soprano voice, titled "Level 2 | Soprano". It consists of two staves of music. The top staff begins with a treble clef, a 4/4 time signature, and a mezzo-forte (*mf*) dynamic marking. The melody starts on a half note G4, followed by quarter notes A4, B4, and C5. After a quarter rest, it continues with quarter notes D5, E5, F5, and G5. The bottom staff begins with a treble clef and a mezzo-piano (*mp*) dynamic marking. It starts with a half note G4, followed by quarter notes A4, B4, and C5. After a quarter rest, it continues with quarter notes D5, E5, F5, and G5. The piece concludes with a whole note G4 on the final staff line.

## Level 2 | Soprano

*mp*

*f*

## Level 2 | Soprano



© Gracenotes LLC 2022



## Level 2 | Soprano

The image displays two musical staves. The top staff is marked with a dynamic of *d* (piano) and the bottom staff with a dynamic of *f* (forte). Both staves contain a sequence of notes and rests, likely representing a specific musical exercise or scale.